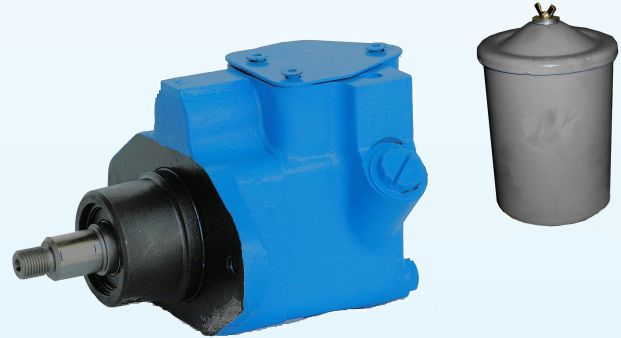


POWER STEERING PUMP

TVTM42

Compact power source for steering assemblies

Integral relief and flow control
 High Efficiency
 Balanced cartridge design
 Peak Pressure 2000psi
 Flows up to 25 US GPM



Model	Cam Ring Size	Displacement cm ³ /r (in ³)	Max Speed (rpm)			Max Pressure	Approx Weight
			@100PSI (7 Bar)	@1500 PSI (100 Bar)	@2000 PSI (140 Bar)		
VTM42	1.0	3.4 (0.21)	7000	5000	4250	2030 psi (140 bar)	6.4 kg 14 lb
	1.5	5.1 (0.31)	7000	4500	4000		
	2.0	6.2 (0.38)	7000	4200	3800		
	4.0	12.9 (0.79)	7000	2800	2800		
	5.0	15.7 (0.96)	6000	2600	2300		
	6.0	19.3 (1.18)	5000	2500	2000		

Cartridge Kit Rotation

To change cartridge kit rotation, slide the cam ring over rotor and vanes making sure that radius edge of vanes is toward the cam ring. Insert locating pins through cam ring, position cam ring so that the arrow on cam ring is pointing in the proper direction.

Flow Control Relief Valve

When installing control relief valve, install hex head first into the cover bore seating on the spring. Press plug full in and insert the lock pin.

****WARNING****

Failure to follow these steps could cause serious malfunctions and pressures to rise to dangerous levels.

Phone: 07 3889 4591

Fax: 07 3889 5921

www.tidalfuidpower.com.au

sales@tidalfuidpower.com.au



XVT	I	FÍ	Œ	Þ	Ü	S
-----	---	----	---	---	---	---

Tidal
Power Steering

Cam Ring Size

10 = 1.0 gallon
 15 = 1.5 gallon
 20 = 2.0 gallon
 40 = 4.0 gallon
 50 = 5.0 gallon
 60 = 6.0 gallon

Controlled flow

15 = 1.5 USgpm (6 l/min)
 20 = 2.0 USgpm (8 l/min)
 25 = 2.5 USgpm (9.5 l/min)
 30 = 3.0 USgpm (11 l/min)
 35 = 3.5 USgpm (13 l/min)
 40 = 4.0 USgpm (15 l/min)
 45 = 4.5 USgpm (17 l/min)
 50 = 5.0 USgpm (19 l/min)
 55 = 5.5 USgpm (21 l/min)
 60 = 6.0 USgpm (23 l/min)
 65 = 6.5 USgpm (25 l/min)
 70 = 7.0 USgpm (26.5 l/min)
 75 = 7.5 USgpm (28 l/min)

K - Threaded Key Shaft

Rotation

R = CW Rotation
 L = CCW Rotation

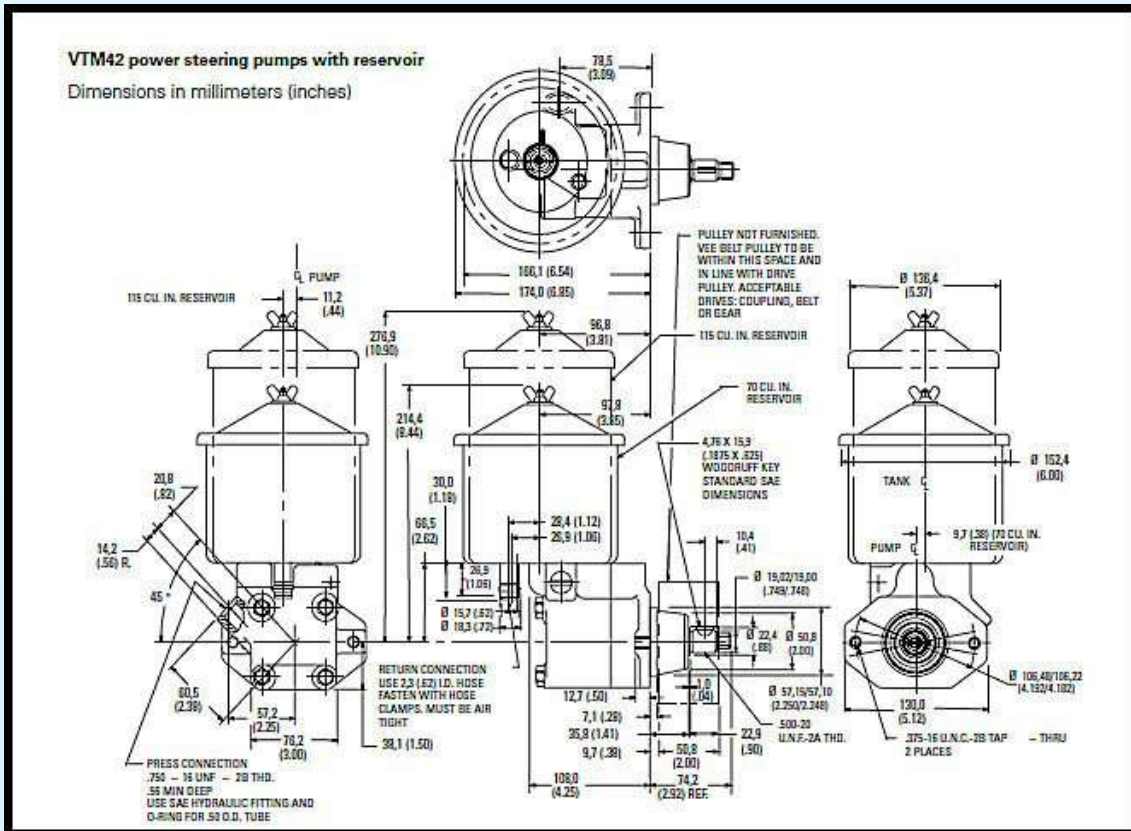
NO - No Tank

WT - With Tank*

*sold separately

Relief Setting

250 psi (18 bar)
 300 psi (20 bar)
 500 psi (35 bar)
 700 psi (52 bar)
 1000 psi (70 bar)
 1200 psi (86 bar)
 1500 psi (100 bar)
 1700 psi (120 bar)
 2000 psi (140 bar)



Phone: 07 3889 4591

Fax: 07 3889 5921

www.tidalfluidpower.com.au

sales@tidalfluidpower.com.au