



**TIDAL FLUID POWER**

AVAILABILITY, SERVICE, QUALITY, PRICE

# Diverter Valve

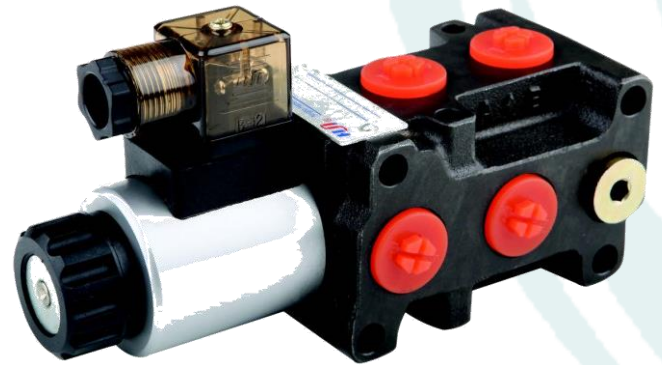
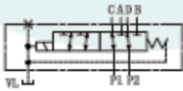
## MOP.06.6 Single

The stackable circuit selector valves, type MOP.06.6 allows one single drive of 6 users with 5 elements connected in a series.

As they are moved from high performance solenoids they don't need external drainage.

These valves can handle high hydraulic powers with a minimal pressure drop,

### SYMBOL



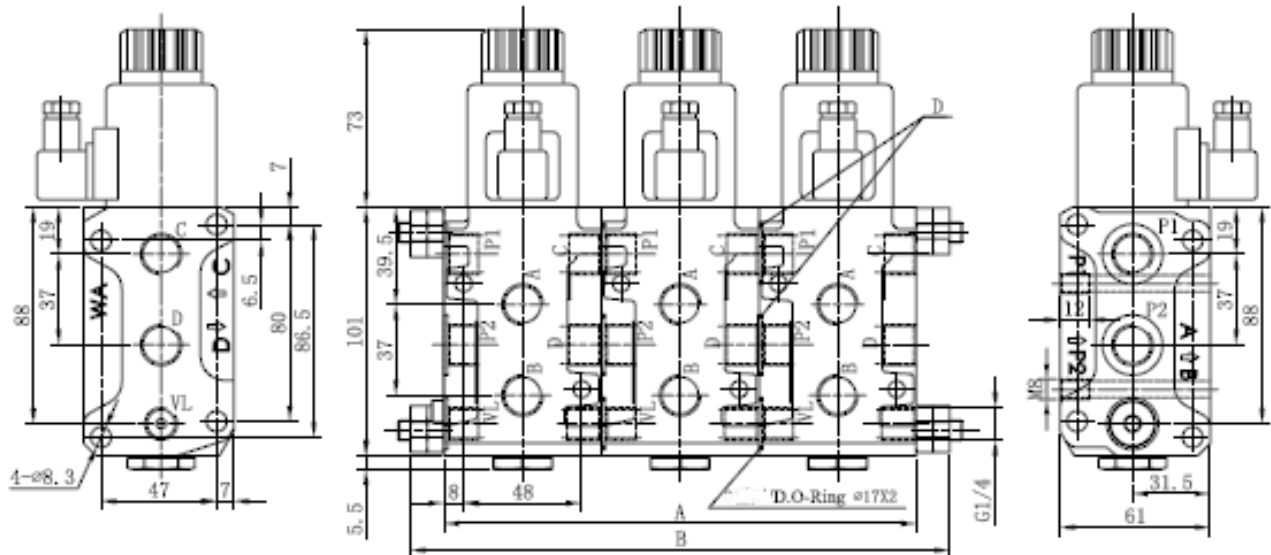
### Specification

- Stackable Circuit
- Max Flow Rate – 50L/Min
- Max Operating Pressure – 25MPa

MOP	06	6	W	E	/ *	*	**	1
Description	Size	Elements	Threaded connections	Drainage	Elements	Voltage	Variants	Series
Stackable circuit selector valve	NG06	6 single elements	3/8" BSP	External	1 2 3 4 5	L = 12V M = 24V W = without DC coils	00 = No Variant V1 = Viton R1 = Rectifier E1 = Emergency button	1



## Installation Dimensions



D.O-Ring:  
 M18X1.5/G3/G8=Φ21X2  
 M22X1.5/G1/G2=Φ23.5X2

Elements	Way	A	B
Number of:		Lengths (mm)	
<b>1</b>	<b>6</b>	<b>64</b>	<b>86</b>
<b>2</b>	<b>8</b>	<b>128</b>	<b>138</b>
<b>3</b>	<b>10</b>	<b>192</b>	<b>214</b>
<b>4</b>	<b>12</b>	<b>256</b>	<b>278</b>
<b>5</b>	<b>14</b>	<b>320</b>	<b>342</b>

Phone: 07 3889 4591

[www.tidalfuidpower.com.au](http://www.tidalfuidpower.com.au)

[sales@tidalfuidpower.com.au](mailto:sales@tidalfuidpower.com.au)